

# Aster

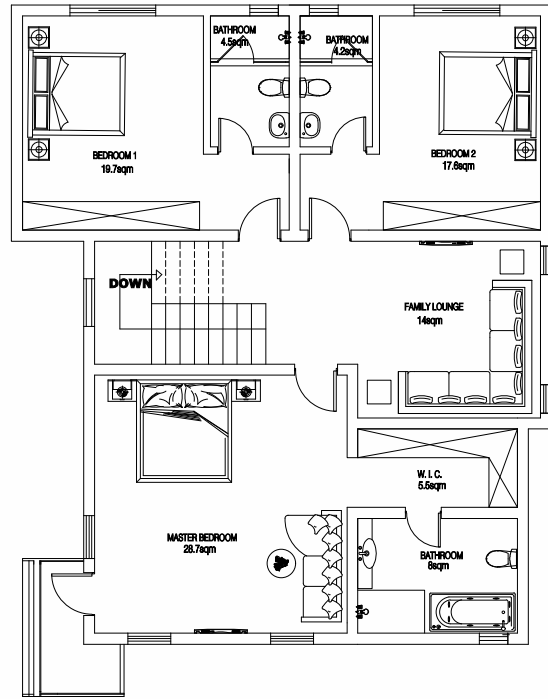
4BEDROOM TERRACE

Named after the Aster flower for its beauty and elegance, this future-ready home features expansive living areas, an additional area configurable for room, study or gym, and 3-car parking. It has a built up area of approximate 127.35sqm.



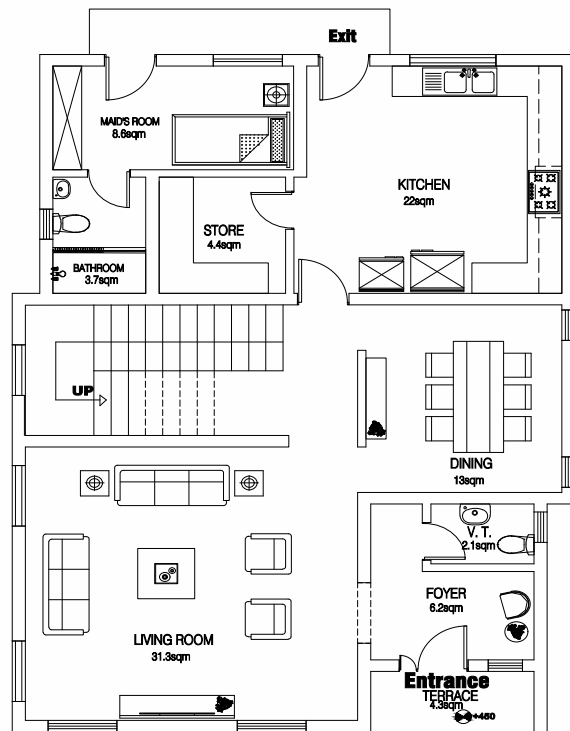


## FIRST FLOOR PLAN



LOUNGE 14SQM, MASTER BEDROOM 28.7SQM, WALK IN CLOSET 5.5SQM, BATHROOM 8SQM, BEDROOM I 19.7SQM, BATHROOM 4.5SQM, BEDROOM II 17.6SQM, BATHROOM 4.2SQM

## GROUND FLOOR PLAN



LIVING ROOM 31.3SQM, DINNING 13SQM, KITCHEN 22SQM, STORE 4.4SQM, MAID'S ROOM 8.6SQM, BATHROOM 3.7SQM, FOYER 6.2SQM, VISITOR'S TOILET 2.1SQM, TERRACE 4.3SQM