

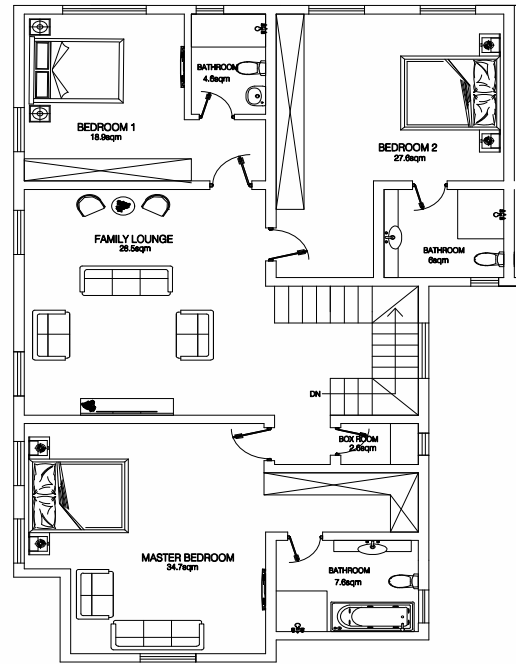
# Marigold

4 BEDROOM SEMI-DETACHED VILLA  
& FLOOR PLANS

Like the African marigold, the function and beauty of this home are in perfect harmony. With a built up area of approximately 167.1sqm, this home features ample living areas, a maid's room and 4 all en-suite bedrooms. It also has a 4-car parking space.

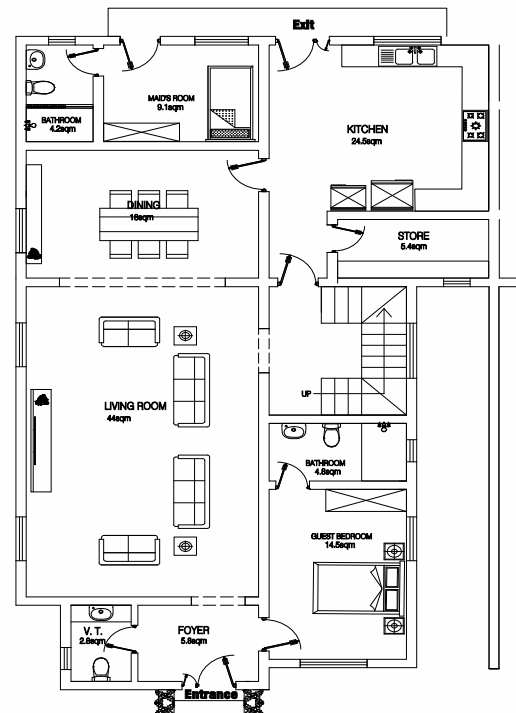


## FIRST FLOOR PLAN



FAMILY LOUNGE 31.8SQM, BOX ROOM 4.49SQM,  
 MASTER BEDROOM 34.7SQM, BATHROOM & TOILET 7.6SQM,  
 BEDROOM I 18.9SQM, BATHROOM & TOILET 4.6SQM,  
 BEDROOM II 26.1SQM, BATHROOM & TOILET 5.4SQM

## GROUND FLOOR PLAN



LIVING ROOM 44SQM, DINNING 18SQM, KITCHEN 24SQM, STORE 5.4SQM,  
 MAID'S ROOM 9.1SQM, BATHROOM 4.2SQM, GUESS ROOM 14.5SQM,  
 BATHROOM & TOILET 4.8SQM, FOYER 5.8SQM, VISITOR'S TOILET 2.8SQM

**HOME FEATURES** - ENSUITE ROOMS | GUEST RESTROOM | BQ | 4-CAR PARKING SPACE

