

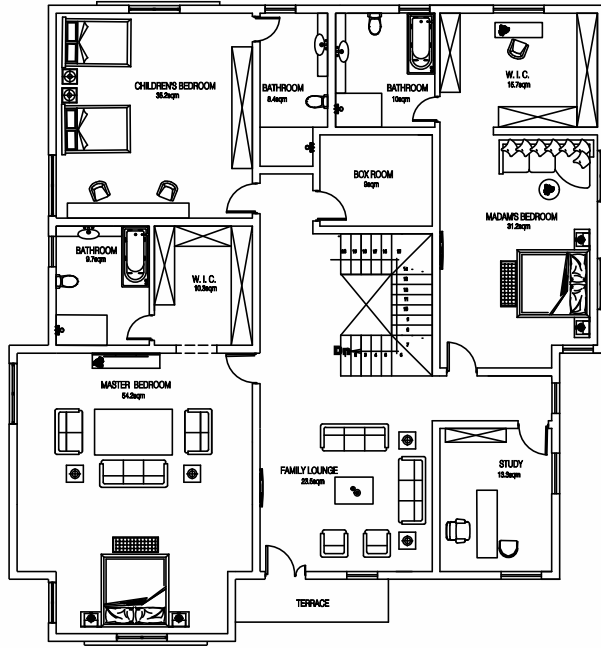
Primrose

6 BEDROOM DETACHED VILLA & FLOOR PLANS

Inspired by the beauty of elegance Africa's Primrose- this gated villa, with its unique design, boasts of approximately 288.06sqm built-up area. Homeowners will enjoy spacious living areas, a modern kitchen, alongside a balcony specially designed to overlook the beauty of the estate's scenery. The home features 5 En-suite rooms, and an additional area configurable for a study, cinema room or gym, 5-car parking space and more...

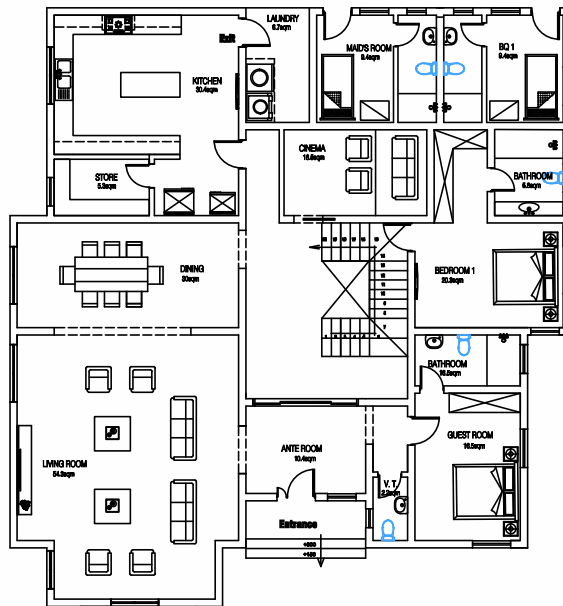


FIRST FLOOR PLAN



FAMILY LOUNGE 23.5sqm, BOX ROOM 9sqm,
 MASTER BEDROOM 54.2sqm, WALK IN CLOSET 10.3sqm, BATHROOM 9.7sqm,
 MADAM'S BEDROOM 31.20sqm, WALK IN CLOSET 15.7sqm, BATHROOM 10sqm,
 CHILDREN BEDROOM 35.2sqm, BATHROOM 8.4sqm, STUDY/LIBRARY 13.3sqm,

GROUND FLOOR PLAN



LIVING ROOM 54.3sqm, DINNING 19.1sqm, KITCHEN 30.4sqm, STORE 5.3sqm,
 MAID'S ROOM 9.4sqm, BOY'S QUARTER 9.4sqm, LAUNDRY 6.7sqm,
 BEDROOM 1 20.3sqm, BATHROOM 5.8sqm, GUEST ROOM 16.5sqm,
 BATHROOM 4.1sqm, ANTE ROOM 10.4sqm, VISITOR'S, 2.2sqm

HOME FEATURES - ENSUITE ROOMS | GUEST RESTROOM | BQ | 5-CAR PARKING SPACE

